

# NEWS

February 2016

## Welcome to 2016!

We are busy in the office making lists of gems we need to purchase to replenish our extensive fine quality stock. In response to popular demand we are updating our price guide, looking at expanding our website and of course supplying wonderful gems to our valued customers.

## Grant's Trip to London

In November 2015 Grant was privileged to be invited to present a talk at the British Gemmological Association (GemA) Conference and FEEG (Federation for European Education in Gemmology) Symposium in London, with 11 other International speakers.

The topic chosen was "The Corundum Conundrum" where Grant explained the changes in Ruby and Sapphire over the past 35 years.

When Grant first came into the business, we were sourcing Rubies from the Mogok district in Burma, Thailand and Cambodia. These areas are no longer producing Rubies as they have been extensively mined. Production has since diminished in the Mong Hsu district of Burma, Tanzania (Songea and Winza), and Vietnam. Currently, the main source of Ruby is Mozambique and a smaller amount from Madagascar. The only synthetic Ruby in those days was the flame fusion Verneuil's. These days there are flux and hydrothermal synthetic Rubies, heat quenched flux healed Vernuil's, glass fracture filled and glass surface filled Rubies, as well as beryllium treated Ruby and Sapphire, diffused Sapphire and diffused Star Sapphire. Grant also reviewed the older Ruby and Sapphire deposits and various synthetics and how to identify and detect them by visual examination.

The presentation was designed to be practical and hands-on in order to upgrade and reinforce the knowledge of gemmologists, jewellers and dealers alike. It was also a great opportunity to meet with other lecturers and gemmologists to discuss changes in gemmology, gemstones and the gem industry as a whole.

[www.hamidbros.com.au](http://www.hamidbros.com.au)



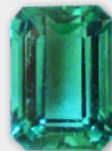
Blue Sapphire  
7.4 x 6.9mm  
2.31ct



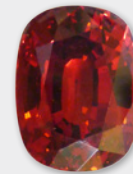
Blue Sapphire  
9.4 x 7.5mm  
2.98ct



Blue Zircon  
10.1 x 7.8mm  
4.20ct



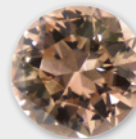
Emerald  
8.1 x 5.8mm  
1.58ct



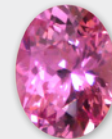
Malaia Garnet  
10.5 x 7.9mm  
4.62ct



Morganite  
12 x 9mm  
3.55ct



Morganite  
8 x 6mm  
2.58ct



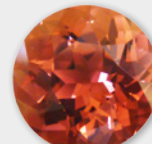
Padparadscha Sapphire  
6.6 x 5.5mm  
0.85ct



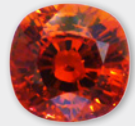
Pink Sapphire  
8.1 x 5.4mm  
1.56ct



Pink Spinel  
8.8 x 9.4mm  
2.87ct



Pink Tourmaline  
12.7mm  
8.23ct



Spessartite Garnet  
7.5 x 7.4mm  
2.75ct



Alexandrite  
9.6 x 6.3mm  
2.07ct



Tourmaline  
10.4 x 6.8mm  
2.88ct



Tsavorite Garnet  
8.1 x 6.4mm  
2.06ct



Purple Sapphire  
10.9 x 5.4mm  
1.76ct



Tanzanite  
8.7mm  
2.73ct



Yellow Sapphire  
10.1 x 10mm  
6.30ct



Round Alexandrites  
2.5mm



Pink Sapphire set  
2.7mm, 1.65ct